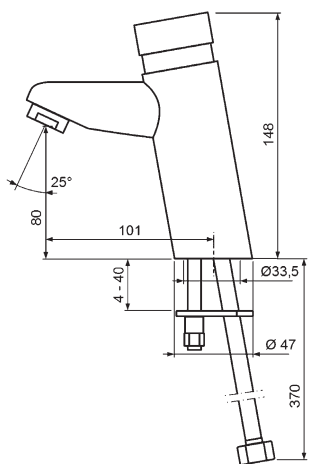


VIGOUR

VIGOUR GmbH - Bergholzstraße 3 - 12099 Berlin

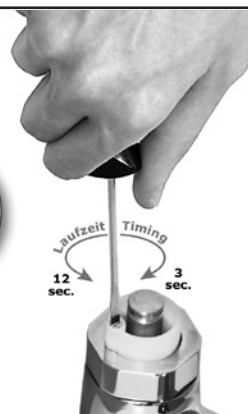
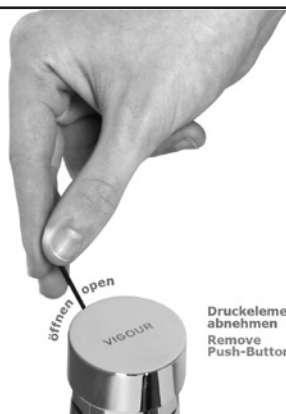
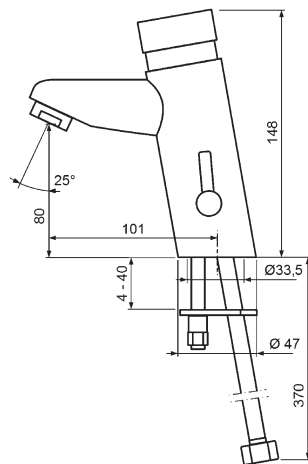
DEPSTVCH (175 90 01)

derby plus Selbstschluss-Ventil
derby plus Basin Self-Closing Valve



DEPSMCH (185 90 01)

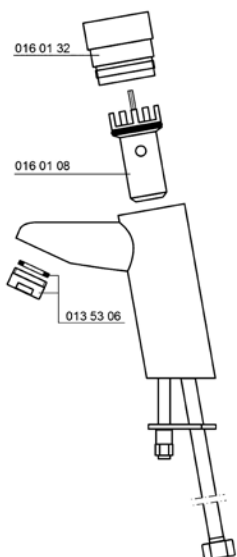
derby plus Selbstschluss-Mischer
derby plus Basin Self-Closing Mixer



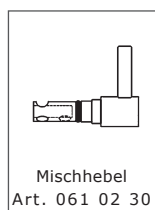
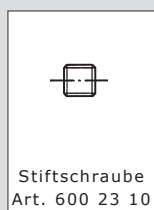
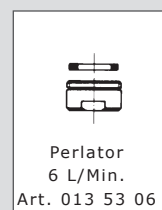
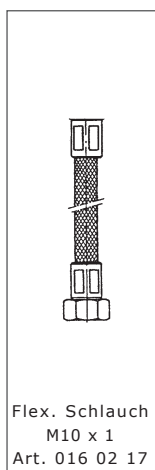
Druckknopf lösen, mit Inbus-Schlüssel 2 mm
 Unfasten push-button with allen key 2 mm

Laufzeit einstellen
 Set timing

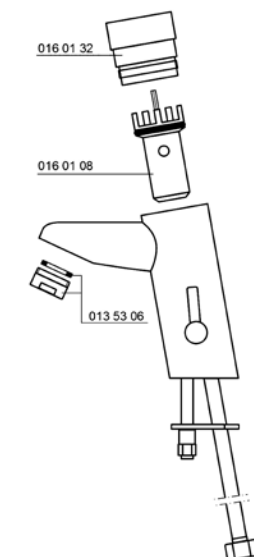
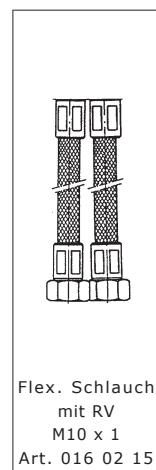
Wichtige Ersatzteile Important Spare Parts



DEPSTVCH



DEPSTVCH + DEPSMCH

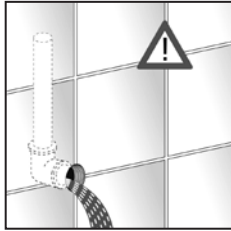


DEPSMCH

VIGOUR

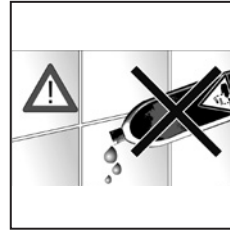
VIGOUR GmbH - Bergholzstraße 3 - 12099 Berlin

Montagevorbereitung Preparation for installation

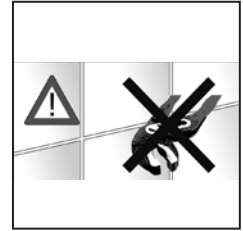


Wasserleitung spülen
Flush water line

Pflege Maintenance

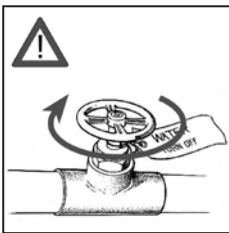


Keine aggressiven
Reinigungsmittel verwenden
Do not use harsh detergent

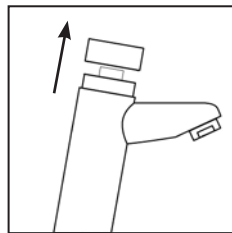


Keine Rohrzange verwenden
Do not use pipe tongs

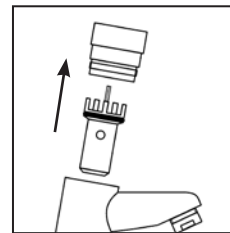
Wartung Service



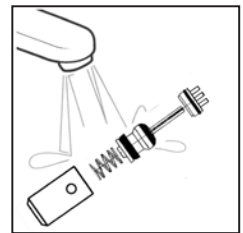
Wasserhauptahn
absperren
Close off
main water valve



Druckknopf
lösen
Unfasten
push-button



Druckknopf und
Kartusche mit Kolben,
Feder, Sitz entnehmen
Remove push-button
and cartridge with pi-
ston, spring, seat



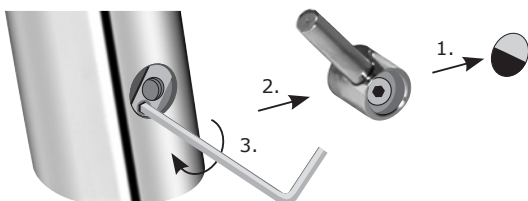
Bei zu langer Laufzeit:
Kartusche innen mit
Leitungswasser ausspülen
In case of too long
runtime: wash out inside
of the cartridge

Nur bei / Only for **DEPSMCH** :

Heißwasser-Begrenzung Hot Water-Restriction

1. Rot-blaues Farbkennzeichenplättchen entfernen
Remove red-blue colored identification plate
2. Hebel entfernen (mit Inbus-Schlüssel 2,5 mm)
Remove lever (with allen key 2,5 mm)
3. Justierschraube eindrehen (mit Inbus-Schlüssel 1,5 mm)
bis gewünschte Heißwasserbegrenzung erreicht ist
Fasten adjusting screw (with allen key 1,5 mm)
until favored hot water restriction is reached

Hebel und Farbkennzeichenplättchen wieder montieren
Reinstall lever and colored identification plate



SONDERZUBEHÖR / SPECIAL OPTION :

Vandalensicheres Mischverhältnis Vandal-proof Mixing Proportion

1. Mischverhältnis wählen
Choose mixing proportion
2. Hebel entfernen
Remove lever
3. Mit Abdeckplatte
(Sonderzubehör Art. 016 02 29) sichern
Secure with cover plate
(Special option Art. 016 02 29)

